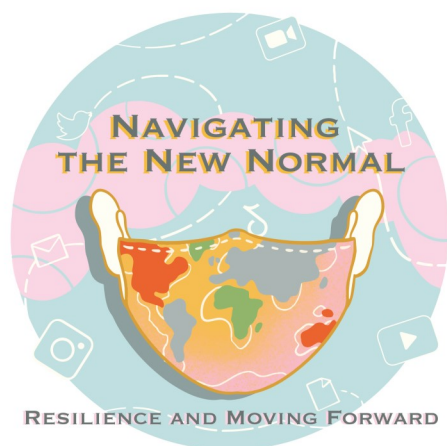




February, 2021
Volume 16, Issue 1

Newsletter

SAVE THE DATE!



ICCHE Annual Conference

Presented Virtually

March 3, 2021

The pandemic has changed our society and how we navigate and move forward. Join us as we talk about these changes and what the “new normal” means to continuing higher education.

See Call for Proposals on page 3 for information on submitting a proposal for the conference.

Registration is open!

(<https://sce.eiu.edu/wconnect/CourseStatus.awp?&course=21ICCHE>)

INSIDE THIS ISSUE

President's Corner.....	2
Member News	4
Spotlight.....	6
Contact Us	7

ICCHE OFFICERS

Matt Hlinak

President
Dominican University
mhlinak@dom.edu

C. Myra Gaytan-Morales

Immediate Past President
University Center of Lake County
mgaytan@ucenter.org

Ruben Howard II

Vice-President
Oakton Community College
rhoward@oakton.edu

Dena Lawrence

Secretary
University of Illinois System
denalawr@uillinois.edu

Vacant

Treasurer



Matt Hlinak, JD

PRESIDENT'S CORNER

Dear ICCHE Colleagues,

Happy New Year! 2020 will likely go down as the worst year in the Council's history, but I'm proud to say that our Executive Committee and membership have risen to the challenge. I want to give special thanks to Vice-President Ruben Howard and Secretary Dena Lawrence for developing our new virtual Coffee Chat series to allow us to stay connected when we can't get together. I'm hoping this will become a new tradition, allowing us to provide accessible professional development and networking opportunities to our membership throughout the year.

For the first—and hopefully last—time in ICCHE history, our 2021 annual conference will be held virtually. Although I'll miss the chance to see my colleagues in person, this provides an opportunity for those who've been unable to travel to the conference in the past to see what they've been missing. This is also a good time to invite your colleagues who haven't been involved in ICCHE before—please spread the word. I hope to see you all online on March 3.

There is light at the end of the tunnel. Your hard work and dedication to your students is helping them get through the most disruptive event higher education has faced in generations. I have never felt prouder to be part of the state's continuing education community than I right now. Here's to a great 2021!

Matt Hlinak

ICCHE Needs a Treasurer

The Treasurer's duties include collecting all dues, keeping in permanent record an account of all funds, paying all bills upon authorization of the President and submitting to the annual meeting an annual report of the financial transactions of the Council. To nominate yourself or others for this position, or for more information, please contact Matt Hlinak at mhlinak@dom.edu or 773-612-5797.



CALL FOR PROPOSALS

ICCHE is excited to host our annual conference virtually this year on March 3, 2021.

Submission is open for proposals until February 12, 2021 at 5pm.

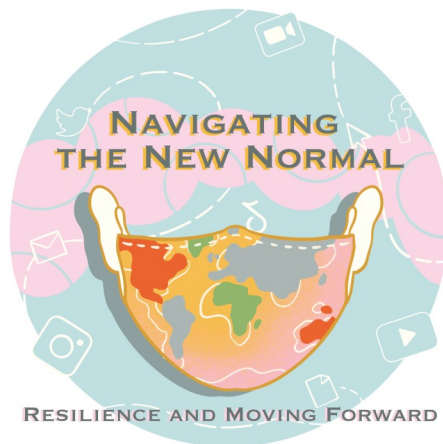
Recommended topic areas:

- The Digital Divide: Serving online learners in rural Illinois
- Support Services for Online Learners
- Flexibility and the Art of Pivoting
- Technical and career connected learning
- Racial justice
- Culturally responsive education practices
- Minority Serving Institutions in Illinois
- Developing special emphasis programs – moving beyond “history month” celebrations
- Technical and career connected learning
- Financial aid programs to bridge the equity gap
- Racial justice
- Unconscious bias
- Accessibility
- Universal Design for Learning (UDL)
- Supporting first-generation students
- Supporting low-income students
- Support services for adult learners
- Addressing equity gaps in higher education
- Increasing equity through academic practices

More information and proposal submission is available at

CALL FOR PROPOSALS

(https://eiu.co1.qualtrics.com/jfe/form/SV_dnfHnSVOTDND1oV)





MEMBER NEWS

University of Illinois Springfield

University of Illinois System Focuses on Accessibility



For a few years now, the University of Illinois Springfield (UIS) Digital Accessibility Remediation Team (DART) has focused on making accessibility compliance a priority. The DART team has remediated thousands of files for the University of Illinois Springfield and helped many faculty members make their courses accessible. Vance S. Martin, Ph.D., the former Accessibility Specialist at UIS and who started the team, has now moved from the UIS campus to his new position of Executive Policy Advisor for Accessibility for the University of Illinois System, Board of Trustees office. His new responsibilities are to work with the system offices, as well as all three campuses to advise and assist with accessibility issues and needs. You can contact Vance at vmarto2s@uillinois.edu or by phone at 217-244-0992 for help or information.

UIS Perspectives: Promoting equity through digital inclusion featured in the SJ-R newspaper, January 9, 2021.



From [State Journal Register Story](#) by Vickie Cook, Ph.D.

To promote equity across Illinois, UIS is committed to continue our support of digital inclusion. Digital inclusion is the ability of all individuals to access and use digital information regardless of geographical location or annual income. In 2019 about 63% of rural families reported access to broadband internet services, which was up from only 35% in 2007.

Southern Illinois University Edwardsville

New Staff will work to Serve the Needs of Businesses and Organizations



Southern Illinois University Edwardsville's Office of Online and Education Outreach (OEO) is increasing its efforts to collaborate with off-campus organizations and corporate partners. With the recent hire of Emily Skowron, Assistant Director of Off-Campus and Corporate Partnerships, OEO is looking to create the bridge between the university's resources and organizations' education and training needs. The office currently has contractual agreements with organizations, in healthcare, aviation and K-12 education. "We hope to bring education and workforce development opportunities to the Metro East region through a variety credit and non-credit opportunities, including fully-online degree and degree completion programs" stated Skowron.



The partnerships with SIUE create a "one stop shop" for both the employer and the employee. A dedicated program student advisor serves as the learner's point of contact. This student advocate coupled with a straight-forward pricing structure are key elements in serving the needs of the organizations and its employees. Tracy Gerber, Program Student Advisor emphasized says, "It is satisfying to help students achieve their personal and professional goals. I am pleased to work in a role that demonstrates SIUE's commitment to service in our community."

MEMBER NEWS

Alternative Digital Credentials (ADCs)

Alternative digital credentials (ADCs) create an opportunity to enhance individual's employment competitiveness by highlighting and defining their competencies relative to in-demand skills in their field, contributing to overall employability and demonstrating an individual's ability to thrive and adapt in a changing workplace.

Southern Illinois University Edwardsville has launched an innovative series of ADCs leading to credentials in Chemical Technician, Quality Assurance, and Food Science Technician. This project is funded through a grant from Madison County

Employment and Training Department (MCETD) offered through the Illinois Department of Commerce and Economic Opportunity (DCEO) as part of the U.S. Dept. of Labor Employment Recovery funds.



Kemp Muniz, SIUE's Coordinator for Alternative Digital Credentials says, "I look forward to working with the learners as well as our partners in Madison and St. Clair counties to bring this unique opportunity to the community". Read more at [about this program in as reported by the Illinois Business Journal](#).

Northern Illinois University

The NIU College of Education and the Rockford Public Schools launched an innovative partnership this fall that will develop school leaders to improve academic and social-emotional learning outcomes and post-secondary success. During the two-year M.S.Ed. program, students will complete master's degrees grounded in exceptional curriculum, professional practice and strong mentoring, which includes coaching from the Illinois Principals Association.

Elizabeth A. Wilkins, coordinator, Graduate Career and Professional Development for the NIU Graduate School and professor in the Department of Curriculum and Instruction, and **Anna M. Quinzio-Zafran**, an adjunct instructor in the department and 2015 alumna of the Ed.D. in Curriculum Leadership program, are celebrating the recent publication of ["The New Teacher's Guide to Overcoming Common Challenges: Curated Advice from Award-Winning Teachers."](#) Among the 130 authors are Lydia Gerzel-Short, assistant professor in the Department of Special and Early Education, and 21 alumni and current NIU graduate students.

COFFEE CHAT

Our Chat series premiered on Thursday, October 15th. The second installment was just held Thursday, January 21st. If you missed it, these sessions were recorded. We have plans to post them on the ICCHE website.

Don't miss the next one! Mark your calendar now!

Upcoming chats are scheduled: **Thursday, April 15, 2:00-3:00PM and Thursday, July 15, 2:00-3:00 PM.** Watch the ICCHE listserv for details on registration.

All Coffee Chat sessions are being conducted via Zoom and include generous time for Q&A/discussion with attendees.



ICCHE SPOTLIGHT - DENA LAWRENCE



Dena Lawrence

1. How and when did you get involved with ICCHE?

Our institutional membership allowed up to 10 members, so I don't recall exactly when I became a member. I do remember enjoying the listserv and ICCHE news, but became much more involved in recent years. In January 2018 a colleague nominated the MyCreditsTransfer team for the ICCHE Innovative Initiative Award. We were honored to be the 2018 recipient! That year I attended the conference and presented. Shortly thereafter Past President, Beth Craig, approached me to serve on the Executive Committee (Multi-University Rep. for 2018-2020). I was very happy to serve! I presented at the 2019 conference and served on the 2020 Conference Planning Committee. I was then contacted to discuss serving as the ICCHE Secretary, which is my role today.

2. What do you think is the best thing for continuing education to have come from the crazy year 2020?

My answer is two-fold. First, the importance of flexibility – in our willingness to find new ways to approach our work and personal lives. Most of us embraced flexible operations philosophically, pre-COVID. But we didn't **fully appreciate** just how adaptable we needed to be until the pandemic drove the point home in rather dramatic fashion. Second was a beautiful, unintended consequence of upending all our operational norms. That is, we've had the opportunity to reach a greater number and more diverse group of people – students and colleagues alike – than continuing education did previously. Our new tools have let us expand our ability to support those who may have always needed it, but weren't necessary as much 'on our radar' before.

3. Tell us a bit about your work as Illinois MyCreditsTransfer Coordinator at the University of Illinois System.

The first thing is, I **truly love** my work! The best thing about being the Illinois MyCreditsTransfer Coordinator is the large, diverse group of fabulous people I work with on a daily basis. I have close colleagues and friends in higher ed across the state. I've also had the pleasure of visiting all our public and many private institutions over the years. I wish everyone could do that. Our institutional diversity is wonderful; there is something for everyone! I also have close colleagues at the Illinois Articulation Initiative's iTransfer office, the Illinois Board of Higher Education, the Illinois Community College Board, and transfer specialists in many other states. I consistently enjoy the opportunity to learn from, and share with, the transfer community at large. I'm proud to be a transfer advocate and to do work that has a positive, meaningful, systemic impact on transfer students, transfer systems, and transfer policies in Illinois and beyond.

In addition, I have a "family" of wonderful colleagues at the University of Illinois System Office in University Academic Programs & Services (UAPS). What an amazing group of talented and experienced people we have in UAPS!! Their support has been amazing, especially throughout COVID challenges. My duties in UAPS provide me the opportunity to work on a variety of higher education initiatives, some beyond the scope of the transfer arena. Much of my work is so enjoyable, if I could afford to, I would do it for free... but don't tell my boss that!

Like us on Facebook!

<https://www.facebook.com/>



SPOTLIGHT CONT'D

4. What was the turning point in your career that brought you to where you are today?

Turning points are an interesting subject for me. I've had so many, it sometimes feels as though I am dancing through life. The first and most significant happened long ago. After high school I didn't know what I wanted to do. I longed for independence. I left school so that I could work full-time. Wow, did I... fulltime and then some, often working 2 or 3 jobs! It didn't take long to learn the challenges of working in a college town (Champaign-Urbana) with only a high school diploma. One day my boss/mentor sat me down to discuss my future. He wanted to nominate me for a management training program, but said I needed at least an Associate degree to qualify. I decided to go back to school at Parkland College. It was a FANTASTIC experience. Parkland changed my life! Currently I have an associate degree, a bachelor degree and a master's degree. The most personally impactful of these has been my associate degree from Parkland. It opened doors but more importantly it opened my eyes and mind to possibilities.

5. What is your best advice for people looking to enter the field of higher education today?

My best advice is this: do what you love and put students first in your approach to the work! You may need to try a variety of things before finding your best fit. That's okay; education is about the journey, not the destination.

6. What is something people would be surprised to know about you?

Perhaps people would be surprised to know that I modeled for several years and taught modeling professionally for many years beyond that.

COMMENTS/QUESTIONS/IDEAS?

Suggestions for changes? Want to be a roving reporter and/or join the fun?

Please let us know your thoughts about the ICCHE e-newsletter! How can it be improved? What types of information would you like to see included? Please forward comments or questions about this e-newsletter, and/or information for future issues to Teri Karpman at the address below.

Teri Karpman

Communications Co-Chair
Assistant Director, Academic Programs & Services
University of Illinois System
807 S. Wright St. Suite 370 Champaign, IL 61820
217.265.5602 tkarpman@uillinois.edu

We're on the Web!

www.icche.org

ICCHE LISTSERV

To send a message to all the people subscribed to the ICCHE Membership list, send an email to:

icchemembers@googlegroups.com

Note: You must be listed as a member of ICCHE in order to use the listserv.

